

QA1
GO DRIVE IT.



**QA1 64-70 FORD MUSTANG REAR SWAY BAR
INSTALLATION INSTRUCTIONS: 52900**

WELCOME TO QA1!

OUR COMMITMENT

Congratulations on your purchase of this high-quality QA1 64-70 Ford Mustang Rear Sway Bar assembly. It is engineered to the highest standards, utilizes the finest materials, and is built with exceptional craftsmanship and attention to detail.

While we understand your eagerness to start your build, please remember that your safety is our utmost priority. Always use an approved and appropriately rated jack, jack stand, or automotive lift, and take all necessary safety precautions to ensure the job is completed safely and correctly.

Before you start, read and understand all instructions thoroughly. With hand tools and essential equipment, you can do the main assembly and setup of your new rear sway bar in your home garage, but if you feel unsure of your abilities during the assembly or installation and need some help or have any uncertainties, please seek the assistance of a qualified mechanic or automotive repair shop.

If you have any product questions or need guidance, please don't hesitate to call and speak with QA1 technical support at 952-985-5675.

Remember, we're here to support you every step of the way and are committed to ensuring your assembly and installation process is successful and enjoyable. We wish you all the best!

BEFORE INSTALLATION

Before you begin the QA1 64-70 Ford Mustang Rear Sway Bar installation, read and understand these instructions carefully. If instructions are not correctly followed, personal injury, equipment, or product damage can result.

Products that have been installed are not eligible for returns. To prevent mistakes, thoroughly read these instructions before you start the Rear Sway Bar assembly procedure.

Check your order as soon as possible upon delivery. QA1 has provided parts list tables and images, as shown on pages 4 and 5. Compare your order's contents against the tables. Call your authorized dealer immediately if you discover anything missing from your order.

This kit uses fasteners to assemble and install. Welding is not required.

It is important to wear the appropriate personal protective equipment (PPE). However, the responsibility does not end there. Follow the manufacturer's instructions for safe use when working with power tools, and be cautious and responsible in your work.

ABOUT THIS MANUAL

PURPOSE

These instructions outline the QA1 64-70 Ford Mustang Rear Sway Bar kit.

This system is designed to work with only the QA1 4-Link Rear Suspension and OE 8" or 9", or QA1 9" rear axle housing.

ITS CONTENTS

The information that follows is described in this instruction set:

- Required tools and supplies.
- Safety, hazard, and warning rules.
- Product overview and included parts.
- Installation and the setup procedures required for use.

Pages with images will have paragraphs and sentences with callout numbers that refer to their respective images, steps, and parts.

Procedures, once described in the text, are generally not repeated. When it is necessary to refer to another procedure, the page and step reference will be given.

REQUIRED TOOLS AND SUPPLIES

- Floor Jack
- Jack Stands
- SAE Wrench Set
- SAE Socket Set
- Torque Wrench (lb-ft)
- Anti-Seize Lubricant

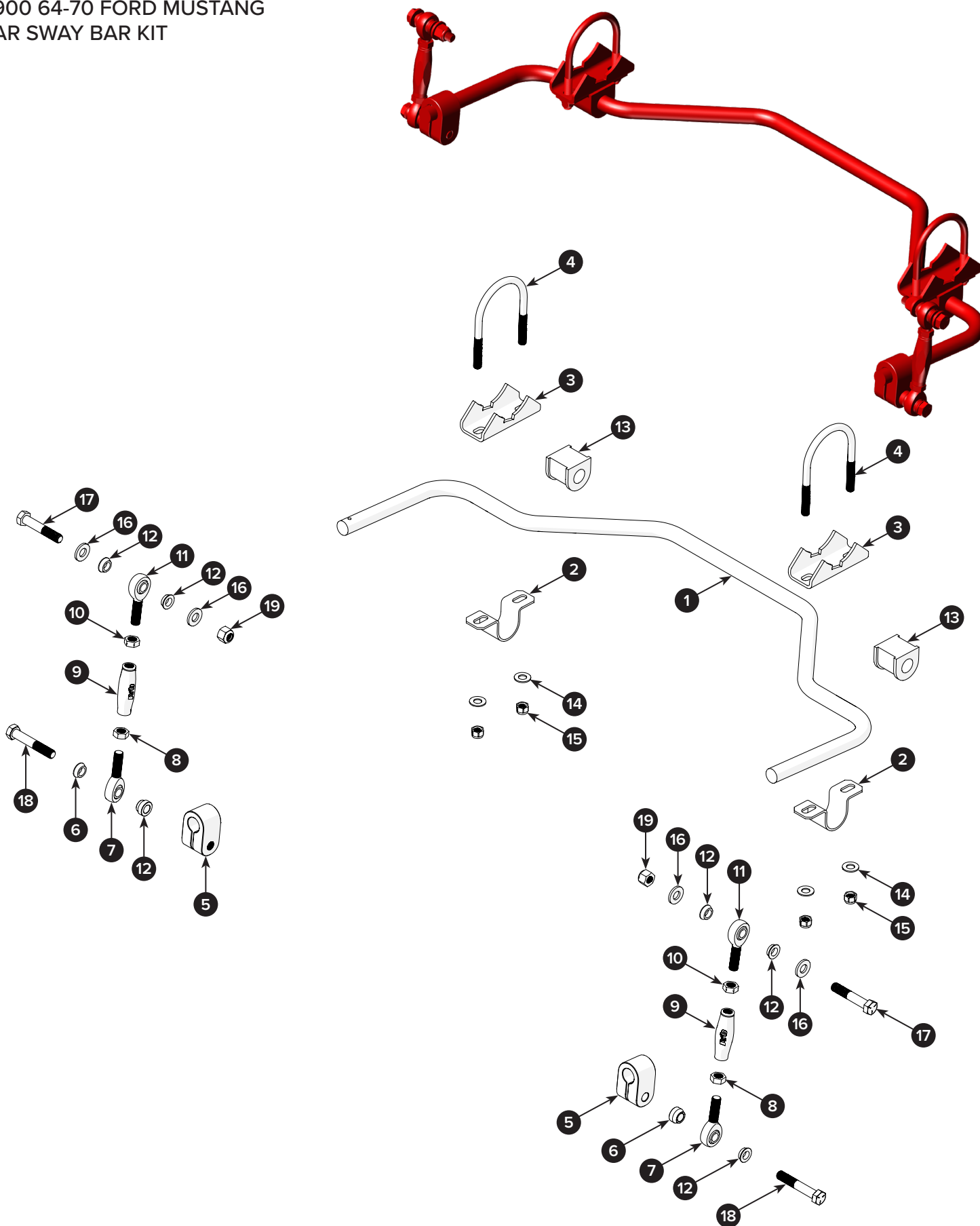
SAFETY FIRST

- Work on your vehicle in an appropriate location.
- Park your car on a level surface.
- Use wheel chocks to prevent vehicle roll.
- Check your owner's manual for the correct jack lift points.
- Always support your vehicle with jack stands.
- Wear personal protection like safety glasses, gloves, and a fine particle respirator mask.
- Never use compressed air to clean brake or metal grinding dust from the brake, suspension components, frame, or rear axle housing.
- Grind metal only in a well-ventilated area, and wear a respirator until the dust has settled and the work area air has been cleared.
- Dispose of damaged or old parts in accordance with local laws. Do not throw any hazardous waste in the trash.
- Follow the manufacturer's instructions for safe use when working with power tools, and be cautious and responsible in your work.

CONTENTS

QA1 REAR SWAY BAR	4-12
PARTS LIST	4
FEATURES AND BENEFITS.....	5
INSTALLATION	6-12
SWAY BAR INSTALLATION.....	6
FINAL ASSEMBLY	10
WARRANTY.....	11

52900 64-70 FORD MUSTANG
REAR SWAY BAR KIT



52900 64-70 FORD MUSTANG REAR SWAY BAR w/INSTALL KIT 7039-459

POSITION	PART #	DESCRIPTION	QTY	TORQUE SPECIFICATION
1	7838-1141	SWAY BAR	1	—

64-70 FORD MUSTANG REAR SWAY BAR INSTALL KIT 7039-459 w/HARDWARE KIT 7039-461

POSITION	PART #	DESCRIPTION	QTY	TORQUE SPECIFICATION
2	7039-173	BUSHING KIT, SWAY BAR FRAME MOUNT	2	—
3	9039-416	BRACKET, REAR SWAY BAR MOUNT	2	—
4	9012-204	U-BOLT, 7/16"-20 x 3.125" x 4.50"	2	—
5	9039-401	BAR CLAMP, ALUMINUM, .875" SWAY BAR	2	—
6	SG84	SPACER, ROD END, STAINLESS, 1/2" ID x .50" WIDE	2	—
7	XMR8	ROD END, RH	2	—
8	JNR8S	JAM NUT, STEEL, 1/2"-20 RH	2	—
9	9033-550	SLEEVE, ALUMINUM HEX, ANODIZED, .875" x 3.00"	2	—
10	JNL8S	JAM NUT, STEEL, 1/2"-20 LH	2	—
11	XML8	ROD END, LH	2	—
12	SG88	SPACER, ROD END, STAINLESS, 1/2" ID X .250" WIDE	6	—
13	9032-173	BUSHING, SWAY BAR	2	—

64-70 FORD MUSTANG REAR SWAY BAR HARDWARE KIT 7039-461

POSITION	PART #	DESCRIPTION	QTY	TORQUE SPECIFICATION
14	9005-243	WASHER, FLAT 7/16" SAE	4	—
15	NA	NUT, NYLOCK, 7/16"-20	4	40 LB-FT
16	9005-228	FLAT WASHER, 1/2" ID	4	—
17	NA	BOLT, HEX, GRADE 5, 1/2-13 X 2.75"	2	75 LB-FT
18	NA	BOLT, HEX, GRADE 5, 1/2"-13 x 3.0"	2	75 LB-FT
19	9014-520	NUT, NYLOCK 1/2-13	2	—

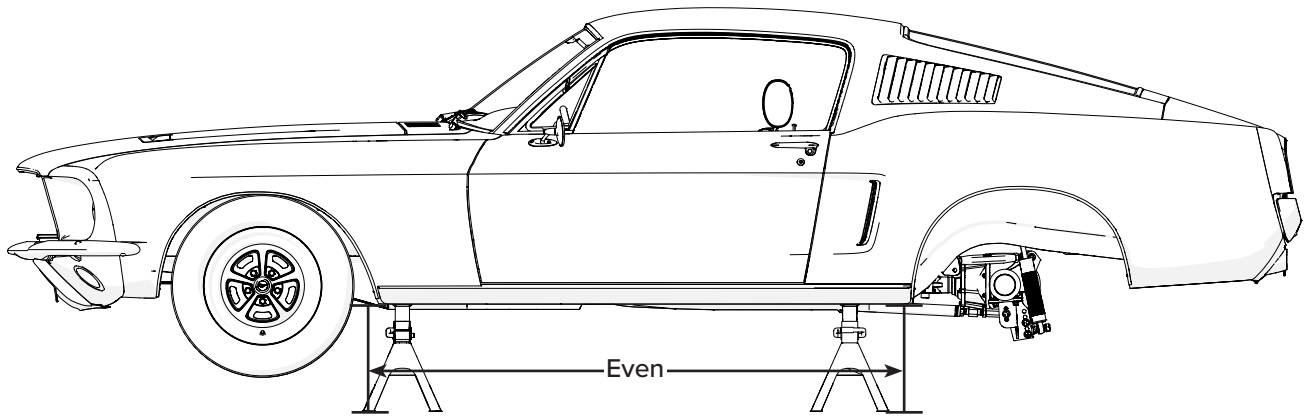
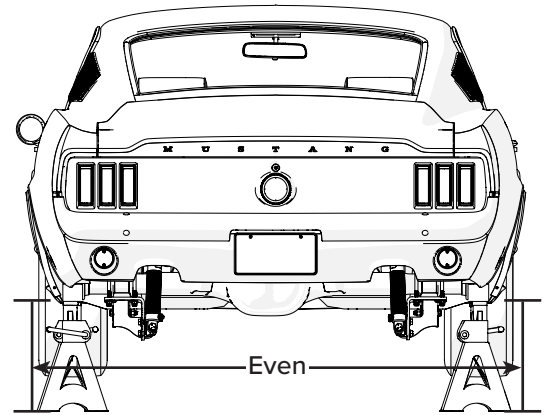
Note: The part positions listed above will be called out in this installation manual as a visual reference to their respective positions during the installation procedure. Refer to these pages during the installation. Count and compare all parts and fasteners to the list above. If parts are missing, contact QA1 at sales@qa1.net.

1

Set the vehicle on jack stands (shown) or a frame table on a flat and true surface.

Make sure the car is set to level. The measurements must be the same from the left to right sides and from the front to rear sides.

Note: For ease of installation, it is recommended to install the rear sway bar kit with the rear wheels removed.



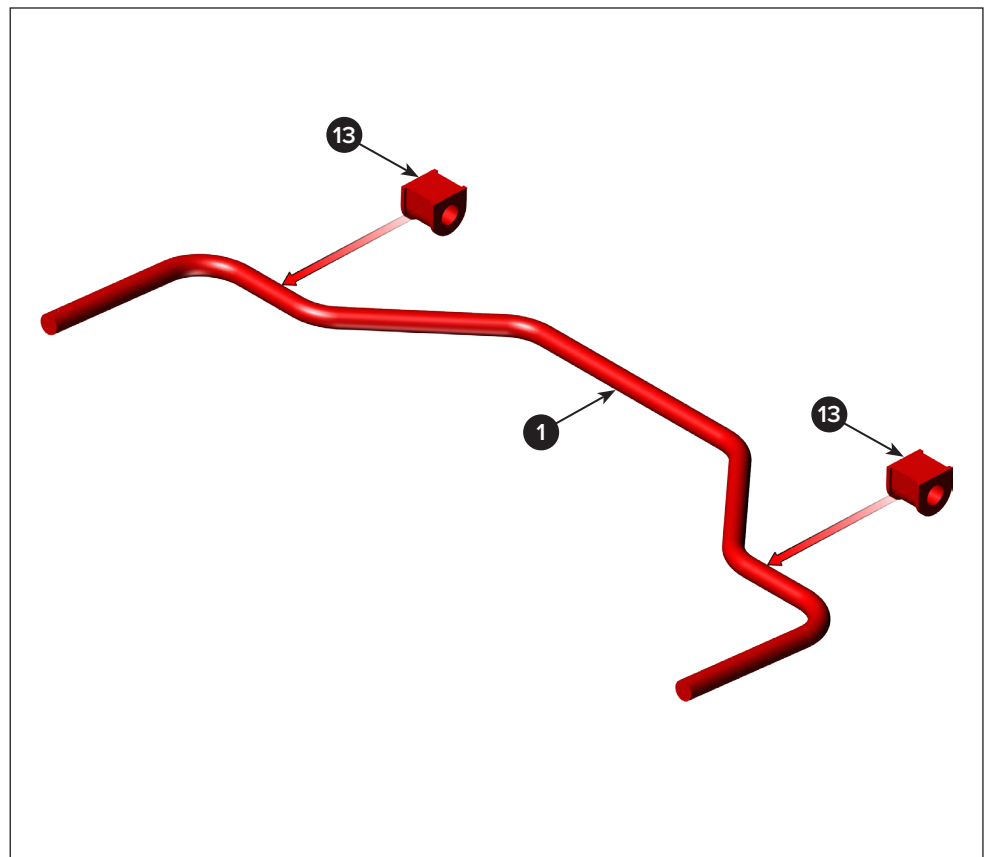
Installer's Note: From this point onward, the body, frame, and other rear suspension components are not shown in these instructions for visual clarity.

2

The sway bar bushings are split for easy installation.

First, apply grease to the sway bar bushings (13), then press the sway bar bushings onto the sway bar (1).

Make sure the round sides of the bushings face down.



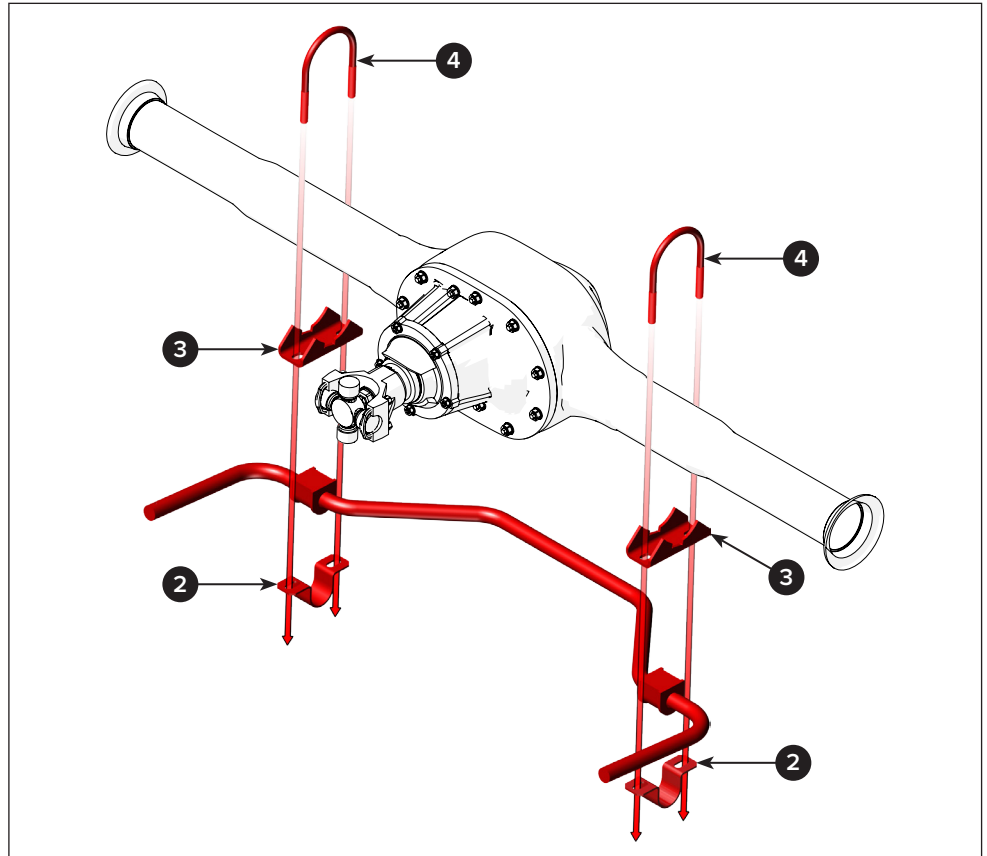
3 Put two sway bar mount brackets (3) under the axle housing tubes.

Put two U-bolts (4) over the axle housing tubes and through the mount brackets.

Put two sway bar frame mounts (2) on the bushings. The round ends will fit together.

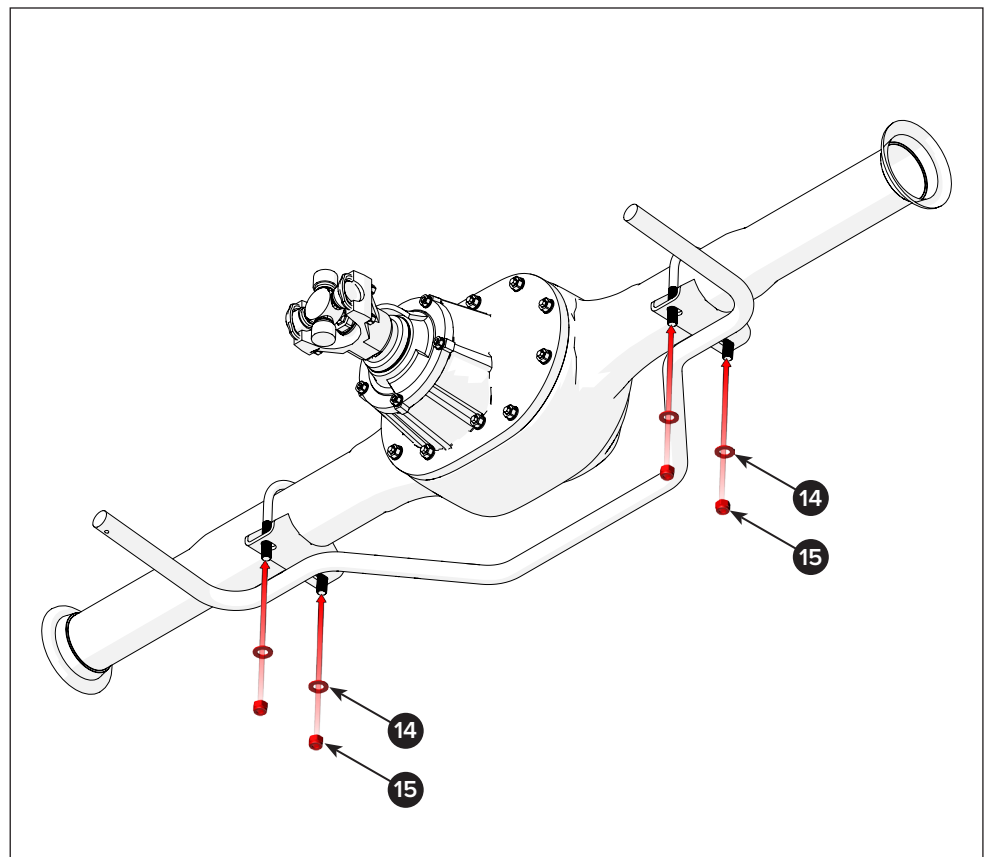
Raise the sway bar assembly to the mount brackets.

If the U-bolts do not easily fit into the drilled frame mount holes, squeeze the U-bolt until it fits.



4 Attach the sway bar with four flat washers (14) and four Nylock nuts (15).

Leave the fasteners loose during installation to adjust the sway bar mounts. They will be torqued during step 10.



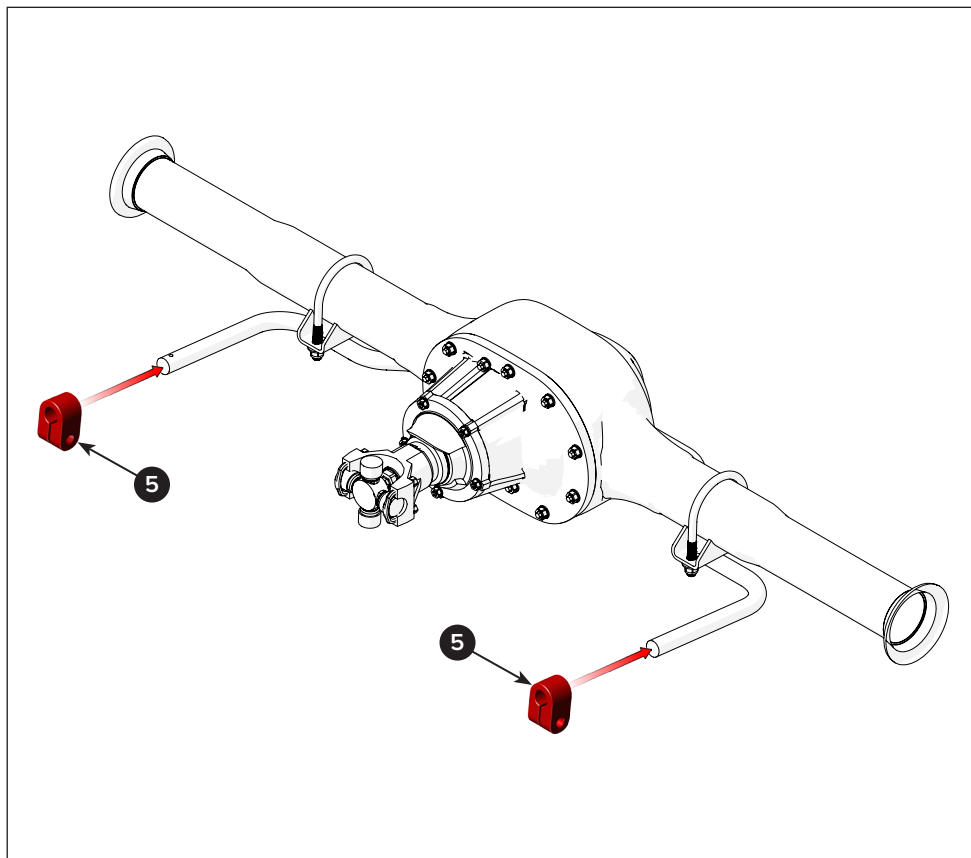
5

Put the aluminum bar clamps (5) on the ends of the sway bar (1).

Make sure the bar clamps' threads are oriented inward and face each other.

Position the bar clamps 1.00" from the ends of the sway bar.

Note: When properly installed, the rounded tops of the bar clamps should face upward.



6

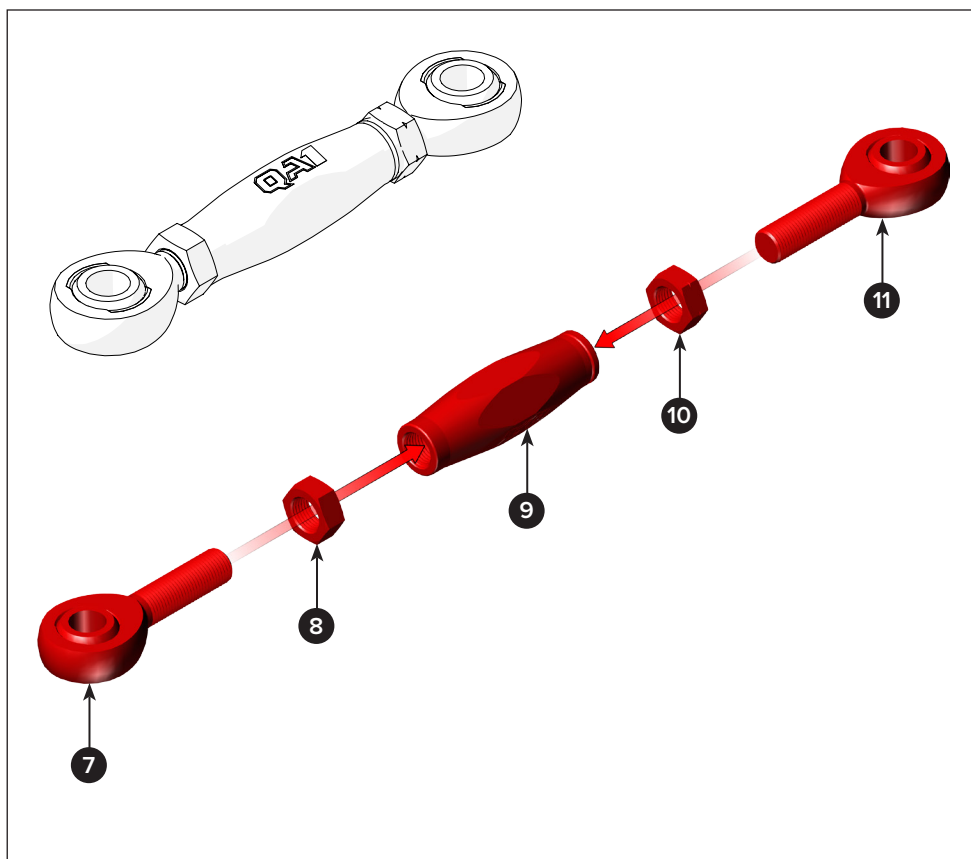
First, thread the right-hand (RH) jam nut (8) onto the right-hand (RH) rod end (7) until it is fully seated.

Next, screw the RH rod end assembly into the adjustable aluminum sleeve (9) until it is fully seated.

Then, thread the left-hand (LH) jam nut (10) onto the left-hand (LH) rod end (11) until it is fully seated.

After that, screw the LH rod end assembly into the adjustable aluminum sleeve until it is fully seated.

Finally, repeat this assembly procedure for the other sway bar link assembly.

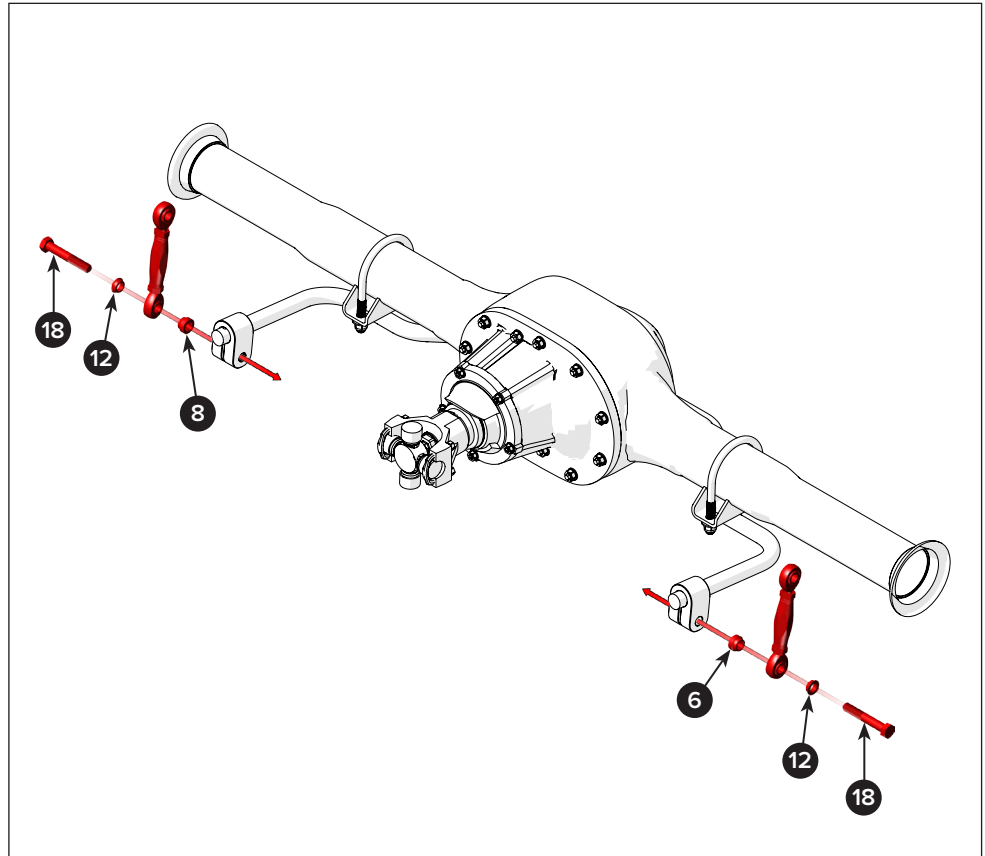


7

Assemble the sway bar links to the bar clamps with one bolt (18), one thin spacer (12), one sway bar link, and one thick spacer (6).

Keep the fasteners loose during installation to allow for adjustment of the sway bar links. They will be tightened during step 10.

Note: The thick spacer (6) must be put between the rod end and bar clamp.



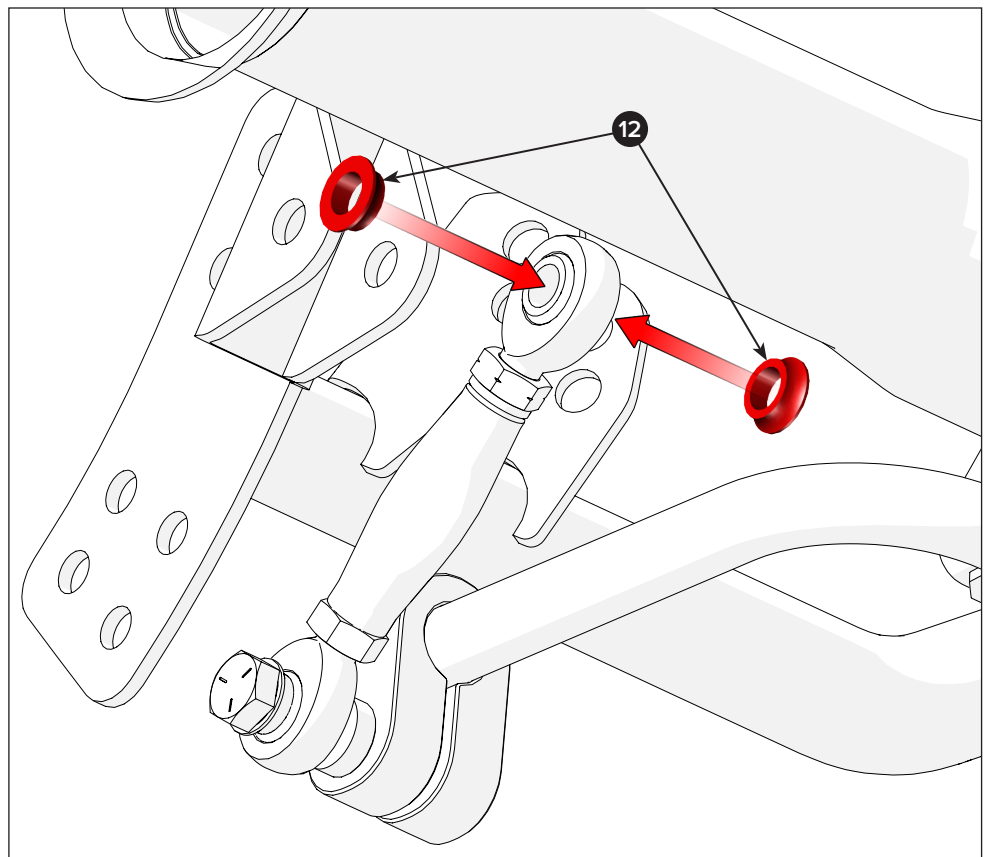
8

First, place one thin spacer (12) on each side of the upper sway bar link.

Then, insert the upper end of the sway bar link into the mount pocket of the QA1 Mustang rear crossmember.

Make sure to align the holes in the sway bar link's rod end with the crossmember.

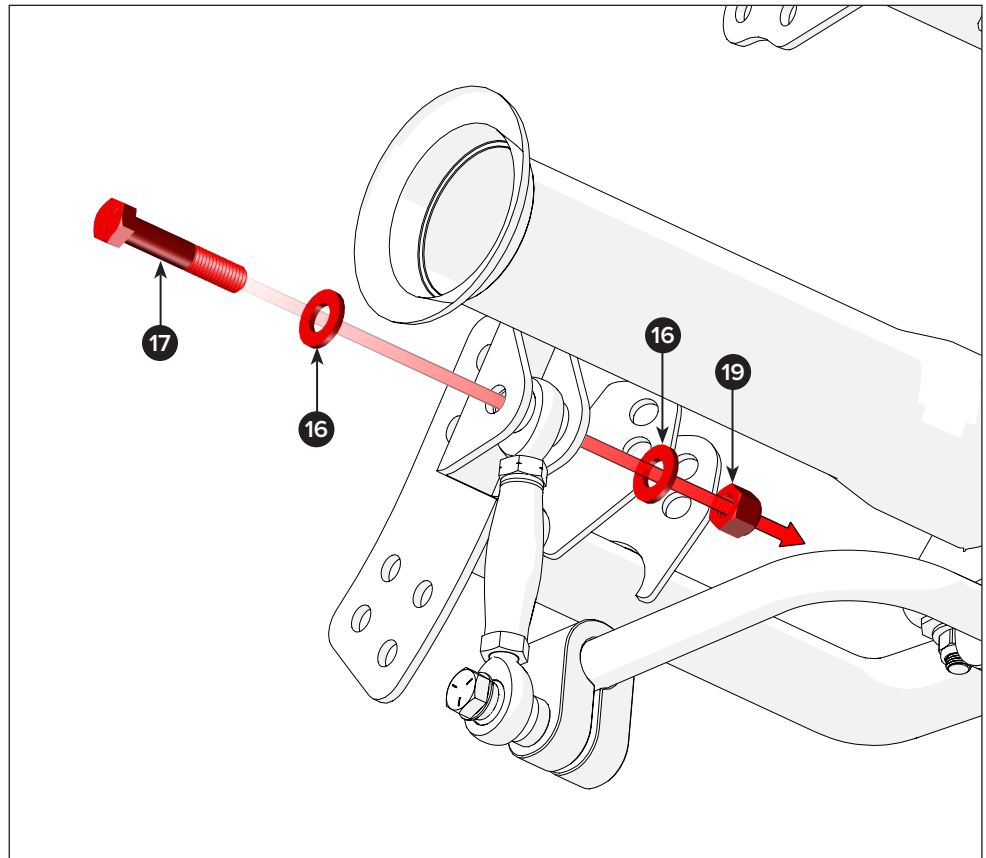
Note: Refer to the installation instructions 9919-366 included in the 64-70 Ford Mustang Rear Suspension kit box for information about the crossmember.



9

Attach the sway bar link's rod end to the crossmember with one bolt (17), two flat washers (16), and one Nylock nut (19).

Keep the fasteners loose during installation to allow for adjustment of the sway bar links. They will be tightened in the next step.



10

With the sway bar assembly complete, it is time to adjust the mounts and links, if needed, and torque all fasteners.

First, adjust the sway bar mounts and make sure both sides are set to the same angle (A).

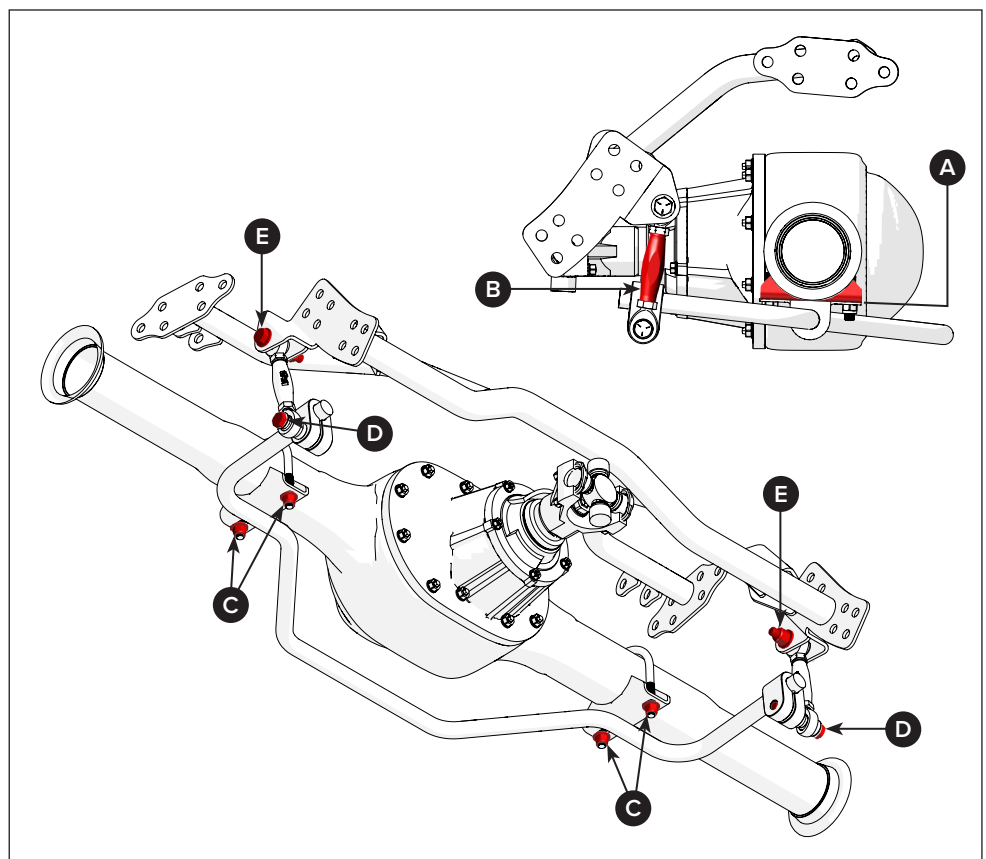
Then make sure the sway bar links are evenly adjusted and set to the same distance (B).

With the mounts and links set, torque the fasteners to the given specifications:

Torque the sway bar mount nuts (C) to frame bolts to 40 lb-ft.

Torque the sway bar link to sway bar bolts (D) to 75 lb-ft.

Torque the crossmember to sway bar link bolts (E) to 75 lb-ft.



DISCLAIMER / WARRANTY

QA1 warrants the products to be free from defects in material and workmanship for one year from the date of sale to the original purchaser. QA1 makes no other warranty of any kind, expressed or implied.

QA1 shall have no obligation under the preceding warranty where the defect results from improper or abnormal use, your negligence, vehicle accident, inappropriate or incorrect installation or maintenance, nor when the product has been repaired or altered in any way. QA1's liability in the case of defective products subject to the preceding warranty shall be limited to the repair or replacement of the defective products at QA1's option.

The user understands and recognizes that racing parts, specialized street rod equipment, and all parts and services sold by QA1 are exposed to many varied conditions due to the manner in which they are installed and used. It is the user's responsibility to determine the proper use or application of QA1 products.

QA1 shall bear no liability for any loss, damage, or injury, either to a person or to property, resulting from the installation, direct or indirect use of any QA1 products, or inability by the buyer to determine proper use or application of QA1 products. With the exception of the limited liability warranty set forth above, QA1 shall not be liable for any claims, demands, injuries, damages, actions, or causes of action to the buyer arising out of or connected with using any QA1 products.

Motorsports are inherently risky; therefore, no warranty or representation is made as to the product's ability to protect the user from injury or death. The user is fully aware and assumes that risk.



